

**NEW!**

ENGINE

Model	: ISUZU 6WG1XBSW-01S
Type	: Water cooled, 4 stroke, 6 cylinder, in-line type, direct injection, turbo diesel engine
Power	: 512 HP (382 kW) @1800 rpm / SAE J1995 (Gross)
Max. Torque	: 2250 Nm @1300 rpm (Gross)
Displacement	: 15.681 cc
Bore and Stroke	: ϕ 147 mm x 154 mm
Emission Class	: EU: Stage V

UNDERCARRIAGE

Type	: Exrtacted-retracted VG (variable gauge) type undercarriage
Shoe	: 2 grouser
No. Of Shoes	: 2 x 48 piece
No. Of Lower Rollers	: 2 x 8 piece
No. Of Upper Rollers	: 2 x 3 piece
Full Trackguard	: Complete
Track Tensioning	: Hydraulic Spring Tensioning

CAB

- Wide cab and easy entrance
- Use of six viscomount cabin mountings that dampen the vibrations
- Cooled storage room
- Colourful, Easy to read TFT indicant monitor
- Glass holder, book and object storage pockets
- Full automatic digitally air-conditioner
- Overclass standards on the visibility
- Pool type flor mat
- Improved operator's comfort through versatile adjustable seat
- Ergonomically redesigned cabin through relocated switch board, and re-styled travel pedals and joysticks.
- USB connected MP3 player
- Easy to open the front sliding glass
- Front and rear sun visor
- Large storage areas
- Improved seat to back angle
- The height adjustable seat armrests
- Opera Control System

TRAVEL AND BRAKERS

Travel	: Fully hydrostatic
Travel Motors	: Axial piston, two speed motor with variable displacement and swash plate, hydarulic brake for per motor. Oil disc brake for per motor.
Reduction	: 3 stage planetary gear
Travel Speed	
High Speed	: 4,90 km/h
Low Speed	: 3,20 km/h
Max. Drawbar Pull	: 41.740 kgf
Gradeability	: 35° (%70)
Parking Brake	: Pilot operated hydraulic brake, oil disc brake
Ground Pressure (600mm Shoe)	: 1,17 kgf/cm ²

HYDRAULIC SYSTEM

Main Pump	
Type	: Double variable displacement axial piston pumps
Max. Flow	: 2 x 504 L/min
Pilot Pump	: 27 L/min
Relief Valves	
Attachment	: 350 kgf/cm ²
Power Boost	: 380 kgf/cm ²
Travel	: 350 kgf/cm ²
Swing	: 350 kgf/cm ²
Pilot	: 40 kgf/cm ²
Cylinders	
Main Boom	: 2 x ϕ 190 x ϕ 130 x 1.800 mm
Stick Cylinder	: 1 x ϕ 210 x ϕ 145 x 2.080 mm
Bucket Cylinder	: 1 x ϕ 200 x ϕ 140 x 1.460 mm

OPERA CONTROL SYSTEM

- Automatic idling Selection of multi-language on control panel
- Improved fuel economy and productivity
- Automatical electric power-off
- Maximum efficiency by selection of power and work modes
- Error mode registry and warning system
- Hidromek Smartlink (Optional)
- Automatic preheating
- Automatical powerboost
- Overheat prevention and protection system without interrupting the work
- Easy-to-use control panel and menus
- Rear-view, arm-view camera
- Possibility to register 27 different operating hours
- Anti-theft system with personal code
- Real time monitoring of operational parameters such as pressure, temperature, engine load

SWING SYSTEM

Swing Motor	: Axial piston type integrated with shock absorber valves
Reduction	: 2 stage planetary gear box.
Swing Brakes	: Pilot operated hydraulic brake, oil disc brake.
Swing Speed	: 7,0 rpm

CAPACITY

Fuel Tank	: 912 L	Engine Oil	: 57 L
Hydraulic Tank	: 350 L	Engine Cooling System	: 90 L
Hydraulic System	: 700 L	Urea Tank	: 70 L

ELECTRICAL SYSTEM

Voltage	: 24 V
Battery	: 2 x 12 V x 200 Ah
Alternator	: 24 V / 90 A
Starting Motor	: 24 V / 7 kw

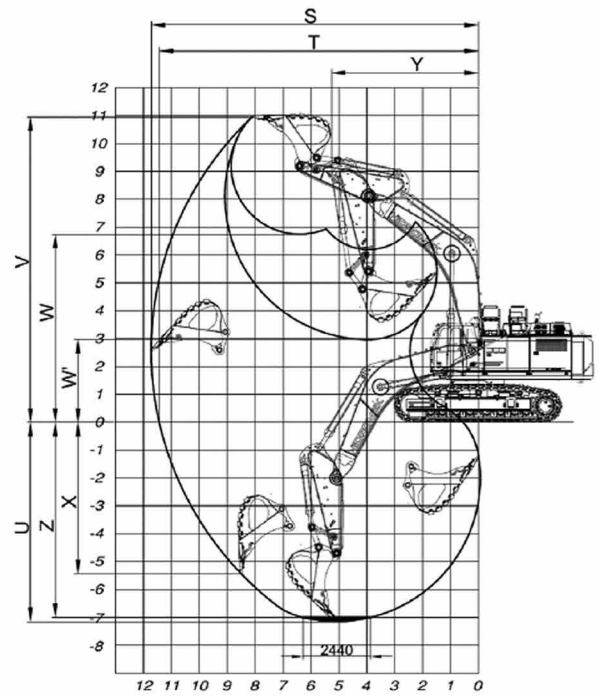
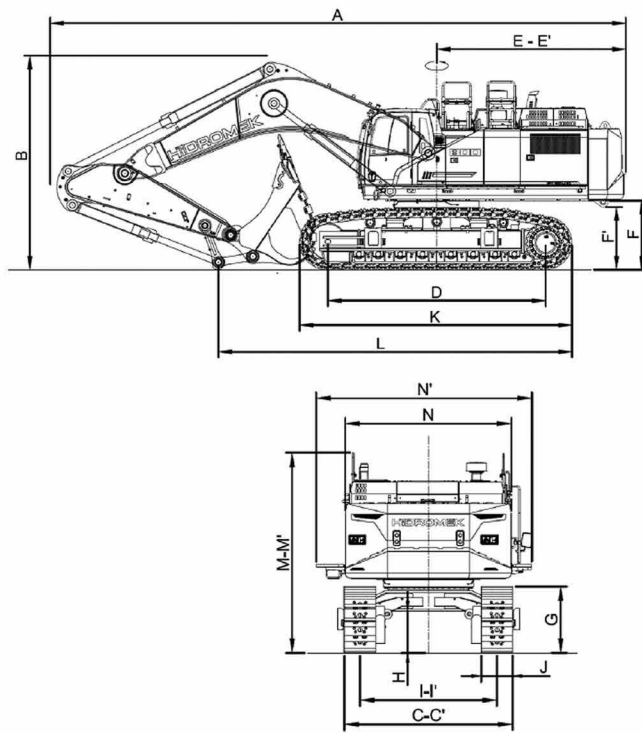
LUBRICATION

Centralized lubrication system is provided for lubrication all difficult-to-reach parts on the components, such as boom and arm

OPERATING WEIGHT

Standard machine operating weight	: 79.500 kg
-----------------------------------	-------------

Operational weight, complying with the ISO 6016 standards, includes full fuel tank, hydraulic system and other liquids, 75kg operator weight and standard equipped machine weight. Optional equipments are not included.



GENERAL DIMENSIONS

Boom Dimension	*6.700 mm
Arm Dimension	*2.700 mm
A - Overall Length	12.680 mm
B - Overall Height (to top of boom)	4.730 mm
C - Overall Width (Retracted-Extracted)	3.490 mm / 4.120 mm
D - Idler Distance	4.798 mm
E - Counterweight Distance	4.115 mm
E' - Turning Radius	4.035 mm
F - Upper Structure Ground Clearance	1.520 mm
G - Crawler Height	1.380 mm
H - Minimum Ground Clearance	875 mm
I - Track Gauge (Retracted-Extracted)	2.840 / 3.470 mm
J - Shoe Width	650 mm
K - Overall Length of Crawler	6.010 mm
L - Length Over Ground	7.790 mm
M - Overall Height (to Top of Cab)	3.580 mm
N - Upper Structure Width	3.450 mm

* Standard

WORKING DIMENSIONS

Boom Dimension	*6.700 mm
Arm Dimension	*2.700 mm
S - Maximum Digging Reach	11.720 mm
T - Maximum Digging Reach at Ground Level	11.430 mm
U - Maximum Digging Depth	7.140 mm
V - Maximum Digging Height	10.960 mm
W - Maximum Dumping Clearance	6.770 mm
W' - Minimum Dumping Clearance	2.980 mm
X - Maximum Vertical Digging Depth	5.060 mm
Y - Minimum Swing Radius	5.640 mm
Z - Maximum Digging Depth (2440 mm level)	6.990 mm

DIGGING PERFORMANCE

Standard Bucket Capacity	5,20 m ³ (SAE)
Bucket Digging Force (Power Boost) ISO	37.700 (41.000) kgf
Arm Crowd Force (Power Boost) ISO	31.900 (34.700) kgf



HİDROMEK®

FACTORY - HEAD OFFICE

Ahi Evran OSB Mahallesi Osmanlı Caddesi No:1 06935 Sincan / ANKARA / TÜRKİYE
Tel: (+90) 312 267 12 60 Fax: (+90) 312 267 12 39
www.hidromek.com

Notice:
Hidromek has the right to modify the specifications and design of the model indicated on this brochure without prior notice.